

Maria Magdalene à4

Andrea Gabrieli
(c. 1510-1586)

Canto

Ma-ri - - a Mag-da - le-ne et al - te - ra Ma-ri - a i - bant di -

Alto

Ma-ri - - a Mag-da - le - ne et al - te-ra Ma - ri - a

Tenor

Et al - te-ra Ma -

Basso

Et al - te - ra Ma - ri - - a

8

lu-cu-lo ad mo-nu-men-tum, ad mo - nu-men - - - tum, et

i - bant di - lo-cu-lo ad mo-nu-men- - - - - tum, Ma-ri - a Mag-da-le - - -

ri - a i - bant di - lo-cu - lo ad mo - nu - men - tum, Ma - ri - a Mag-da-le -

i - bant di-lo-cu - lo ad mo - nu - men-tum, Ma - ri - a Mag-da-le -

15

al - te-ra Ma - ri - a i - bant di - lu-cu-lo ad mo - -

- - - ne et al - te-ra Ma - ri - a i - - bant di - lu-cu-lo ad mo - nu -

ne et al - te - ra Ma - ri - a i - bant di - lu - cu -

ne et al - te-ra Ma - ri - a i - bant di - lu-cu-lo ad

21

- nu-men- - - - tum: Je - sum quem quae-ri - tis non est hic: sur -

men - - - - tum: Je - sum quem quae-ri - tis non est hic: sur -

lo ad mo - nu - men - tum: Je - sum quem quae-ri - tis non est hic: sur -

mo-nu-men - - - tum: Je - sum quem quae-ri - tis non est hic: sur -

29

rex-it, sur - rex-it si-cut lo - cu-tus est, prae - ce-det vos,
 8 rex-it, sur - rex-it si - cut lo-cu-tus est, si-cut lo - cu-tus est, prae -
 8 rex-it, sur - rex-it si - cut lo-cu-tus est, si-cut lo - cu-tus est, prae - ce-det vos in Ga-li-lae -
 rex-it, sur - rex-it si - cut lo-cu-tus est, prae - ce-det vos in Ga-li-lae - - -

36

prae-ce-det vos in Ga-li-lae - - - am, prae - ce-det vos in
 8 ce - det vos, prae-ce-det vos in Ga-li-lae - am, prae - ce - det vos in Ga - -
 8 am, prae-ce-det vos, prae - ce-det vos in Ga - li-lae - - - - - am, prae - ce-det vos in
 am, prae-ce-det vos in Ga-li-lae - am, prae - ce-det vos in

42

Ga-li-lae - am, i - bi e - um vi-de-bi - tis. Al - le-lu - ia,
 8 - li-lae - - - am, i - bi e - um vi-de - bi - tis. Al - le-lu - ia,
 8 Ga-li-lae - - - - am, i - bi e - um vi-de - bi - tis. Al-le-lu - ia, Al-le-lu -
 Ga-li-lae - am, i - bi e - um vi - de-bi - tis. Al-le-lu - ia, Al - le-lu -

49

Al - le-lu - ia, Al-le-lu - ia, Al-le-lu - ia, Al-le-lu - - - ia.
 8 Al-le-lu - ia, Al-le-lu - ia, Al - le - lu - - - - ia, Al - - le - lu - ia.
 8 ia, Al-le-lu - ia, Al-le - lu - ia, Al-le - lu - ia, Al-le - lu - - - - ia.
 ia, Al - le - lu - ia, Al - - le - lu - ia.

Maria Magdalene à4

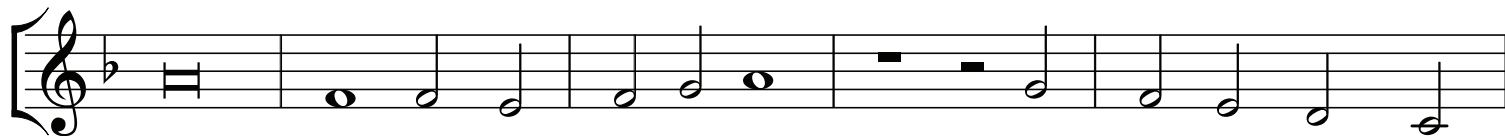
Andrea Gabrieli
(c. 1510-1586)

Canto



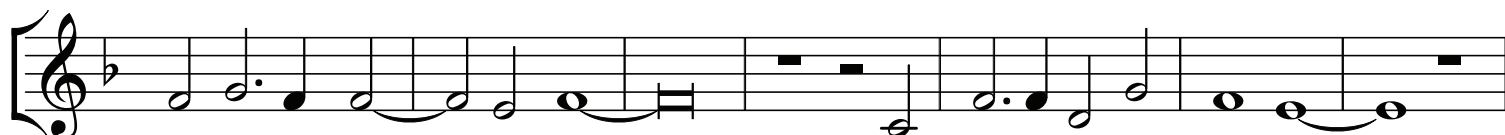
6

Ma - ri - - a Mag - da - le - ne et al - te - ra Ma - ri -



11

a i - bant di - lu - cu - lo ad mo - nu - men - tum,



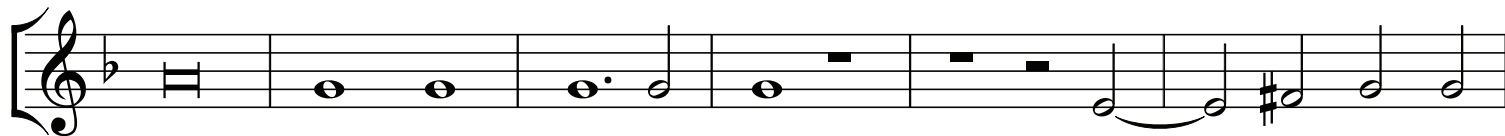
18

ad mo-nu-men - - - tum,_____ et al-te-ra Ma - ri - a_____



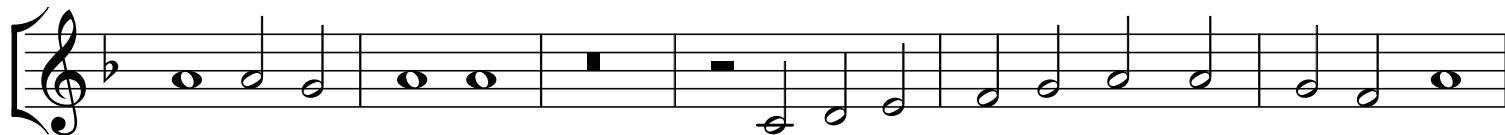
23

i - bant di - lu - cu - lo ad mo - - nu - men - - tum:



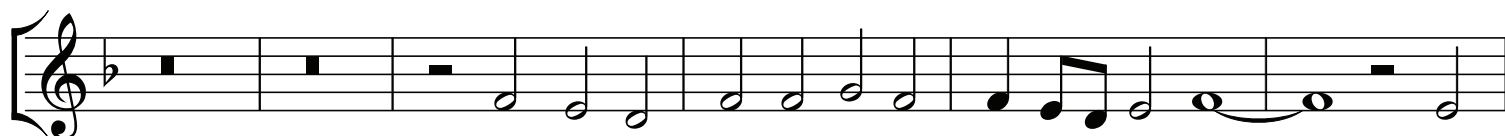
29

Je - sum quem quae - ri - tis non_____ est hic: sur -



35

rex - it, sur - rex - it si - cut lo - cu - tus est, prae - ce - det vos,



41

prae - ce - det vos in Ga - li - lae - - - - am, _____ prae -



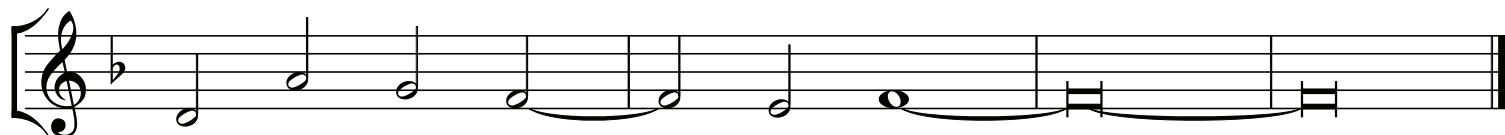
47

ce - det vos in Ga - li - lae - am, i - bi e - um _____ vi - de - bi - tis.



52

Al - le - lu - ia, Al - le - lu - ia, Al - le - lu - ia, Al - le - lu -

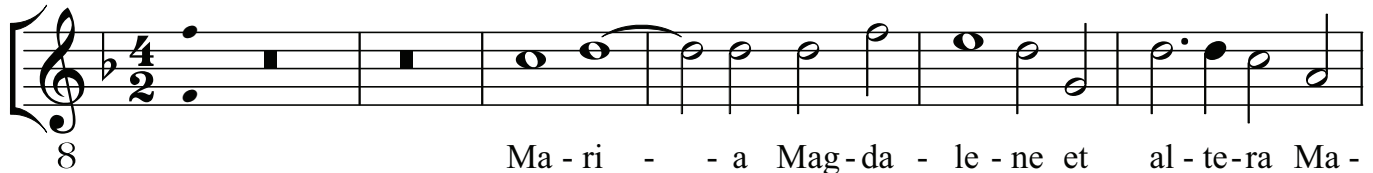


ia, Al - le - lu - - ia. _____

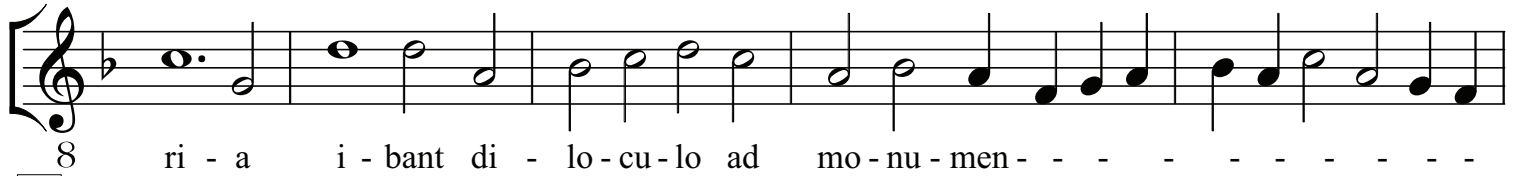
Maria Magdalene à4

Andrea Gabrieli
(c. 1510-1586)

Alto



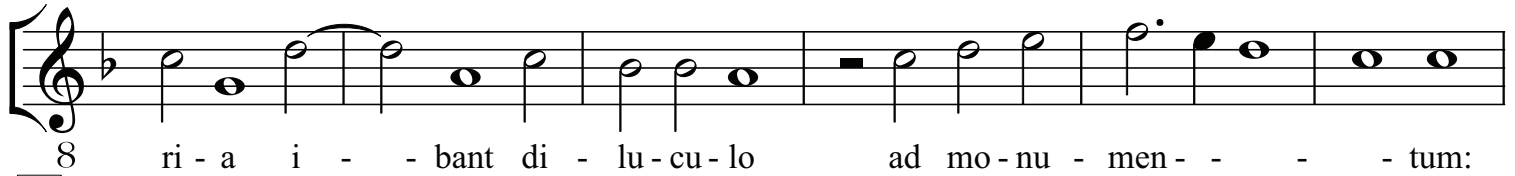
7



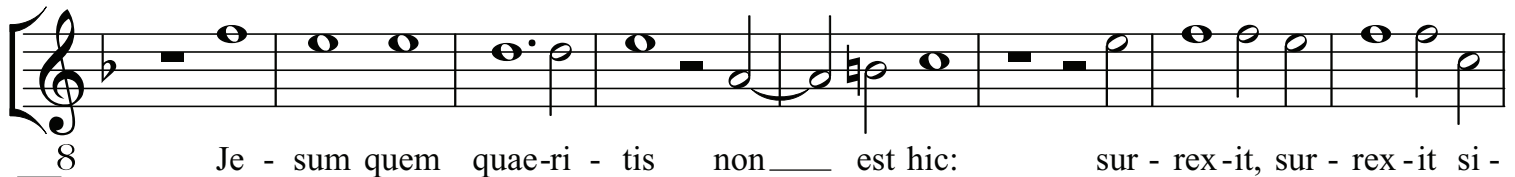
12



17



23



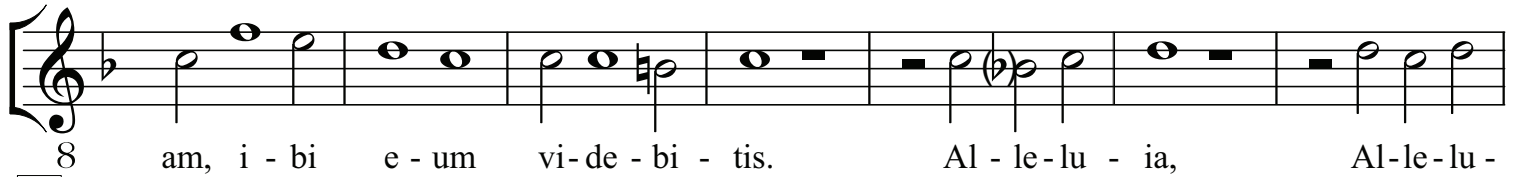
31



37



43



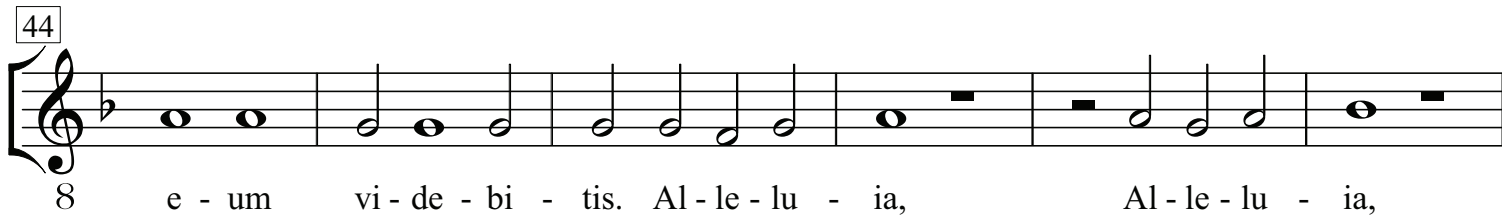
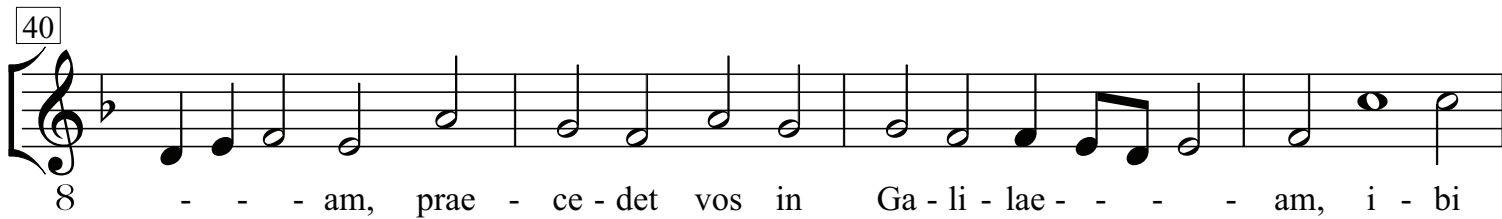
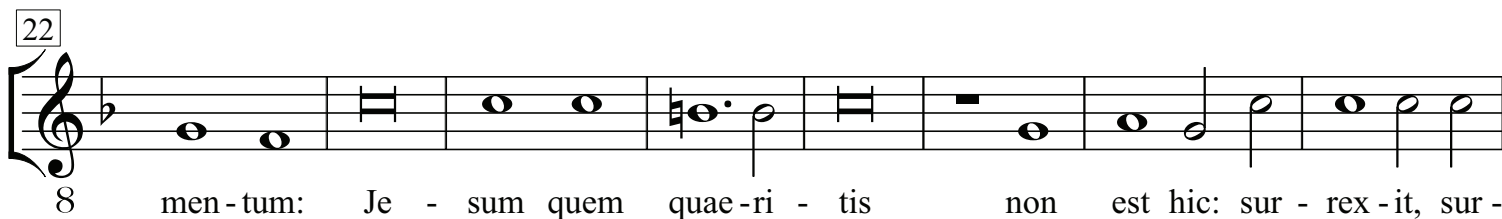
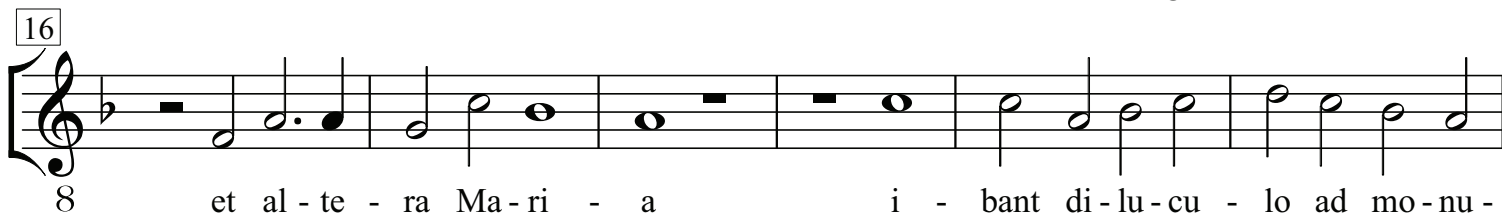
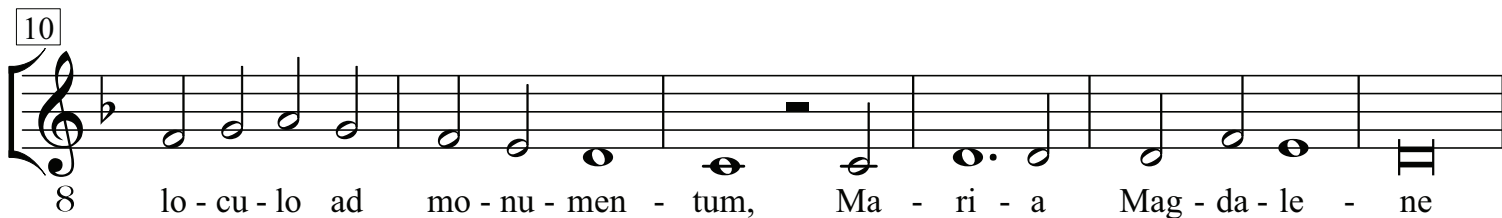
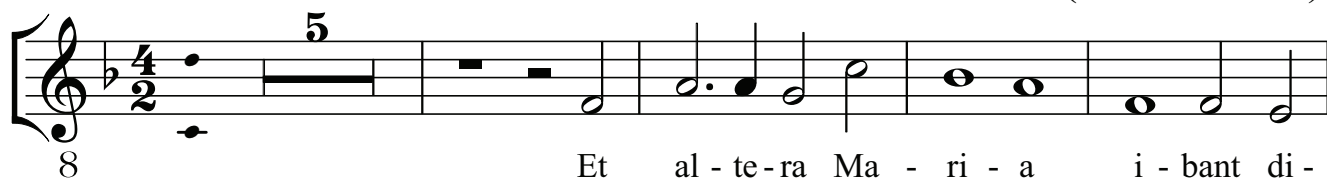
50



Maria Magdalene à4

Andrea Gabrieli
(c. 1510-1586)

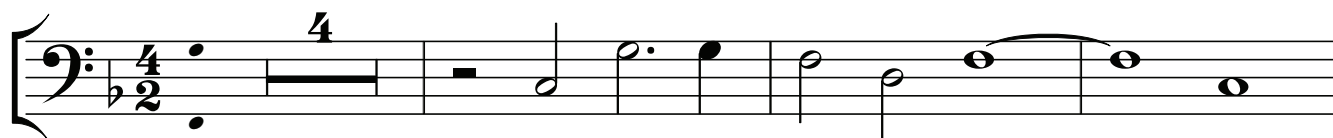
Tenor



Maria Magdalene à4

Andrea Gabrieli
(c. 1510-1586)

Basso



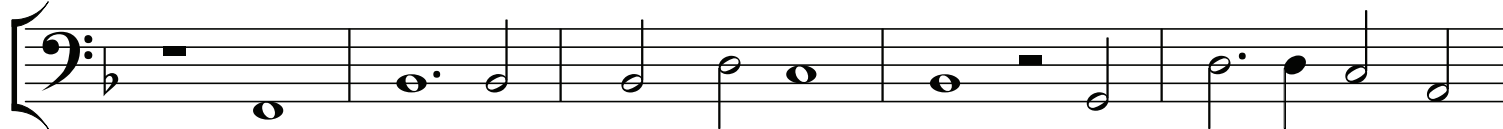
8

Et al - te - ra Ma - ri - - a



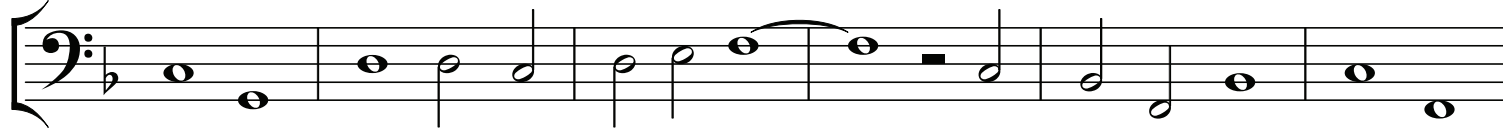
12

i - bant di - lo - cu - lo ad mo - nu - men - tum,



17

Ma - ri - a Mag - da - le - ne et al - te - ra Ma -



23

ri - a i - bant di - lu - cu - lo _____ ad mo - nu - men - - tum:



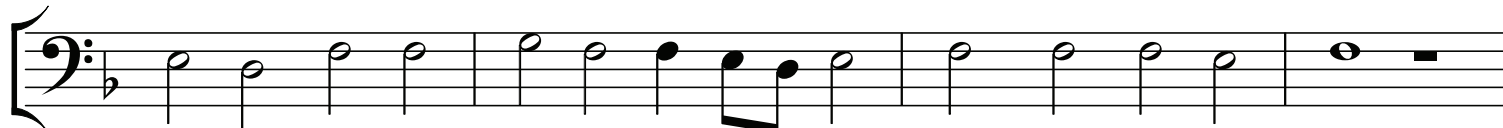
29

Je - sum quem quae - ri - tis non est hic: sur -



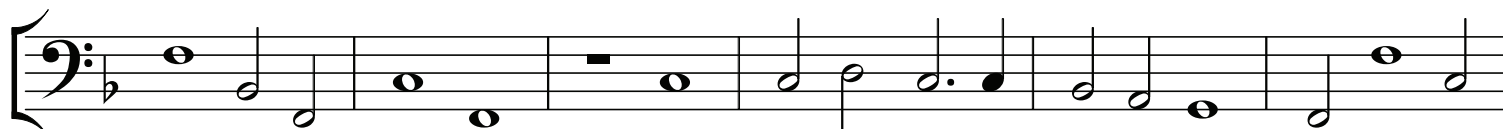
34

rex - it, sur - rex - it si - cut lo - cu - tus est, prae -



38

ce - det vos in Ga - li - lae - - - am, prae - ce - det vos



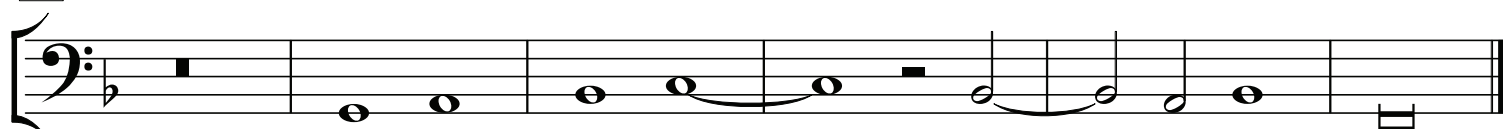
44

in Ga - li - lae - am, prae - ce - det vos in Ga - li - lae - am, i - bi



50

e - um vi - de - bi - tis. Al - le - lu - ia, Al - le - lu - ia,



Al - le - lu - ia, _____ Al - - le - lu - ia.